



# Company Overview

## Who We Are

Loretto is a comprehensive continuing healthcare organization which provides a variety of services for older adults throughout Central New York. Formed in 1926, Loretto transforms elder care by deinstitutionalizing nursing homes and long-term care services, and replacing them with home-like settings utilizing person-first care. The comprehensive system of care serves close to 10,000 individuals each year through 19 specialized programs in Onondaga and Cayuga counties.

### OUR MISSION:

*To be a family of exceptional people caring for and about each other.*

### OUR VISION:

*Loretto will always be the best place to live with purpose, wholeness and dignity.*

## The Loretto Family of Services — A Continuum of Care all in one community

Loretto is an innovative developer of services that meet emerging community needs: From home-based care to skilled nursing and memory care, we provide a full range of services and facilities described below. We serve the needs of all income levels as this community's safety-net provider.

### VITAL INFO

#### FOUNDED:

1926 by the Catholic Diocese

#### OWNERSHIP:

Not-for-profit

#### BUSINESS MODEL:

Leading healthcare provider to almost 10,000 individuals and their families.

#### HEADQUARTERS:

700 E. Brighton Avenue  
Syracuse, New York 13205

#### CEO:

Kimberly Townsend

#### EMPLOYEES:

6th largest employer in Central New York with more than 2,500 dedicated employees and compassionate caregivers.

#### AREAS SERVED:

Loretto is the 4th largest health system in Central New York, servicing Onondaga and Cayuga Counties

#### ANNUAL REVENUE:

\$180 million

#### WEBSITE:

[www.lorettocny.org](http://www.lorettocny.org)

### HOME & COMMUNITY-BASED CARE



#### HOME CARE & COMMUNITY-BASED CARE

- PACE CNY
- Daybreak Adult Medical Day Program
- McAuliffe Health Center
- Respite

### ENRICHED LIVING



#### INDEPENDENT LIVING

- The Nottingham
- The Bernardine
- Malta House
- Malta Manor
- O'Brien Road Apartments

### ASSISTED LIVING



#### NEIGHBORHOOD COMMUNITIES

- Community Residences
- Forest View at Fayette
- Highland House



#### ENRICHED & ASSISTED LIVING

- The Bernardine
- Buckley Landing
- The Heritage
- Sedgwick Heights
- The Nottingham

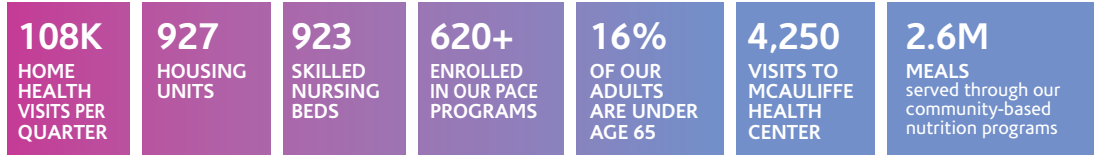
### SKILLED NURSING



#### SKILLED NURSING & REHAB CARE

- Loretto Health and Rehabilitation Center
- The Nottingham Residential Health Care Facility (RHCF)
- The Commons on St. Anthony

**PROGRAM STATS:**



**INDUSTRY TRENDS:**

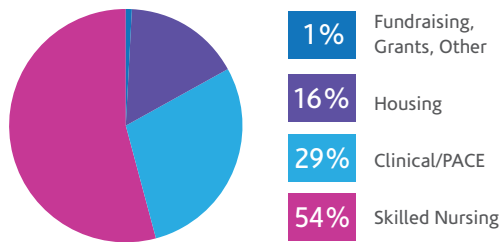
- 70% of Loretto residents are supported by Medicaid
- Average age of residents coming into our facilities is 88 years old – and some live with us for 10 even 20 years
- By 2030, there will be double the number of people over 65 – 228,000 in Onondaga County
- Individuals with Alzheimer’s or dementia will increase from 5.8 million to 14 million by 2050 – 15% increase in NYS
- Nearly 1 in 3 seniors who dies each year has Alzheimer’s or another dementia.
- Cost for caring for those with Alzheimer’s and other dementias will increase from \$290 billion to \$1.1 trillion by 2050

**EMPLOYEE TRENDS:**

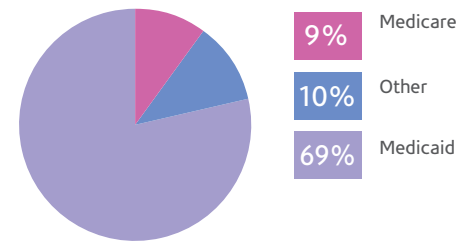
- 7 years – average tenure of employees
- 65% of employees reside in zip codes below the poverty level – 71% are culturally diverse and 65% are women, often head-of-household
- More than 450 people have been successfully trained and placed in jobs at Loretto through partnership with CenterState CEO’s Work Train program

**FINANCIALS:**

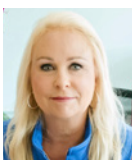
Revenue by Service Area



Skilled Nursing Payor Mix



**EXECUTIVE LEADERSHIP:**



**Kimberly Townsend**  
Chief Executive Officer



**John Murray**  
Chief Financial Officer



**Brandon Claps**  
Chief Information Officer



**Holly Hoehner**  
Vice President, General Counsel



**Sheila Boyle**  
Interim Vice President, Human Resources



**Julie Sheedy**  
Chief Marketing & Engagement Officer



**Brenda McCutcheon**  
Vice President, Mission



**Jennifer Ingerson**  
Vice President, Housing



**Stephanie Button**  
Vice President, PACE



**Joelle Margrey**  
Vice President, SNF Nursing

**To learn more about Loretto, please contact:**

Julie Sheedy, Chief Marketing & Engagement Officer  
jsheedy@lorettosystem.org or 315.413.3480

Loretto  
700 East Brighton Avenue  
Syracuse, New York 13205  
315.469.5570

